

### Malassezia Dermatitis - which treatment?



Culture of skin swabs from dogs with dermatitis is a commonly requested test. We routinely culture for both bacteria and yeasts and, particularly where *Malassezia pachydermatis* is isolated, we highlight the possibility of underlying allergic disease.

Blood testing to identify specific allergens is available through our **allervet**<sup>TM</sup> service—but in the meantime, what is the best treatment for *Malassezia*?

A recent study\* reviewed a large number of publications, articles and studies to collect evidence-based data regarding the most effective therapy for *Malassezia* dermatitis. The authors found good evidence of efficacy for the following regimes:

#### Topical (preferred):

**2% miconazole nitrate/chlorhexidine gluconate shampoo (Malaseb®) twice weekly for 3 weeks**

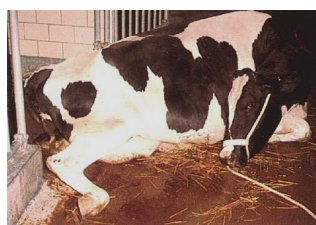
#### Systemic:

**5 mg/kg ketoconazole once daily for 3 weeks OR Itraconazole 5 mg/kg once daily for 2 consecutive days per week for 3 weeks, with food to enhance absorption**

In patients suffering from chronic relapses, regular topical treatment or pulse therapy with itraconazole is recommended. Topical therapy is preferred as there is a lower risk of toxicity.

\* Evidence-based veterinary dermatology: a systematic review of interventions for *Malassezia* dermatitis in dogs. Negre et al, *Vet Dermatol* 2009;20(1):1-12

### Downer Cow Profile



Hypocalcaemia, coliform mastitis, obstetrical paralysis, fat cow syndrome, physical injury and peritonitis can all lead to peri-parturient recumbency. Whatever the underlying cause, the burning question remains

#### **'Will she get up?'**

**Serial biochemical profiling provides valuable diagnostic and prognostic information.**

The NWL **Downer Cow or Sheep Profile** comprises CK and AST enzyme estimations to assess myopathy, plus urea and BHB to give an indication of metabolic status, in addition to calcium, phosphorus and magnesium assays.

**Results are reported on the day of sample receipt and the cost is £18.80 + VAT.**

Critical levels of CK activity, depending on how long the cow has been recumbent, give a good indication of the prognosis.

### Canine Conjunctivitis

Taking eye swabs for bacterial culture from dogs with chronic or recurrent conjunctivitis is often disappointing as bacterial infection is not usually the primary problem in such cases.

Differentials include:

- ◆ **Non-conjunctivitis causes of red eye** (uveitis, glaucoma, corneal ulcer or keratitis, retro-orbital disease) or epiphora (ectopic cilia, blocked tear ducts, caruncular trichiasis, entropion)
- ◆ **Conformation/exposure of conjunctivae** (ectropion, microphthalmia, eyelid deformity)
- ◆ **Chronic irritation** (FB, entropion, ectropion, trichiasis, meibohmian granulomas)
- ◆ **Dry eye** - a Schirmer Tear Test is essential.
- ◆ **Atopic skin disease**
- ◆ **Environmental irritation**
- ◆ **Follicular conjunctivitis** affecting the bulbar surface of the third eyelid (typically <18months of age).
- ◆ **Other causes** e.g. plasma cell infiltration (GSD), ligneous conjunctivitis (Doberman)

### NWL Clin Path Club

The next North West region meeting will be at 8.00 pm on 28 May 09 at The Tickled Trout, Preston, just off the M6.

**Ian Wright will speak on 'Toxocariasis...still in the public eye?'**